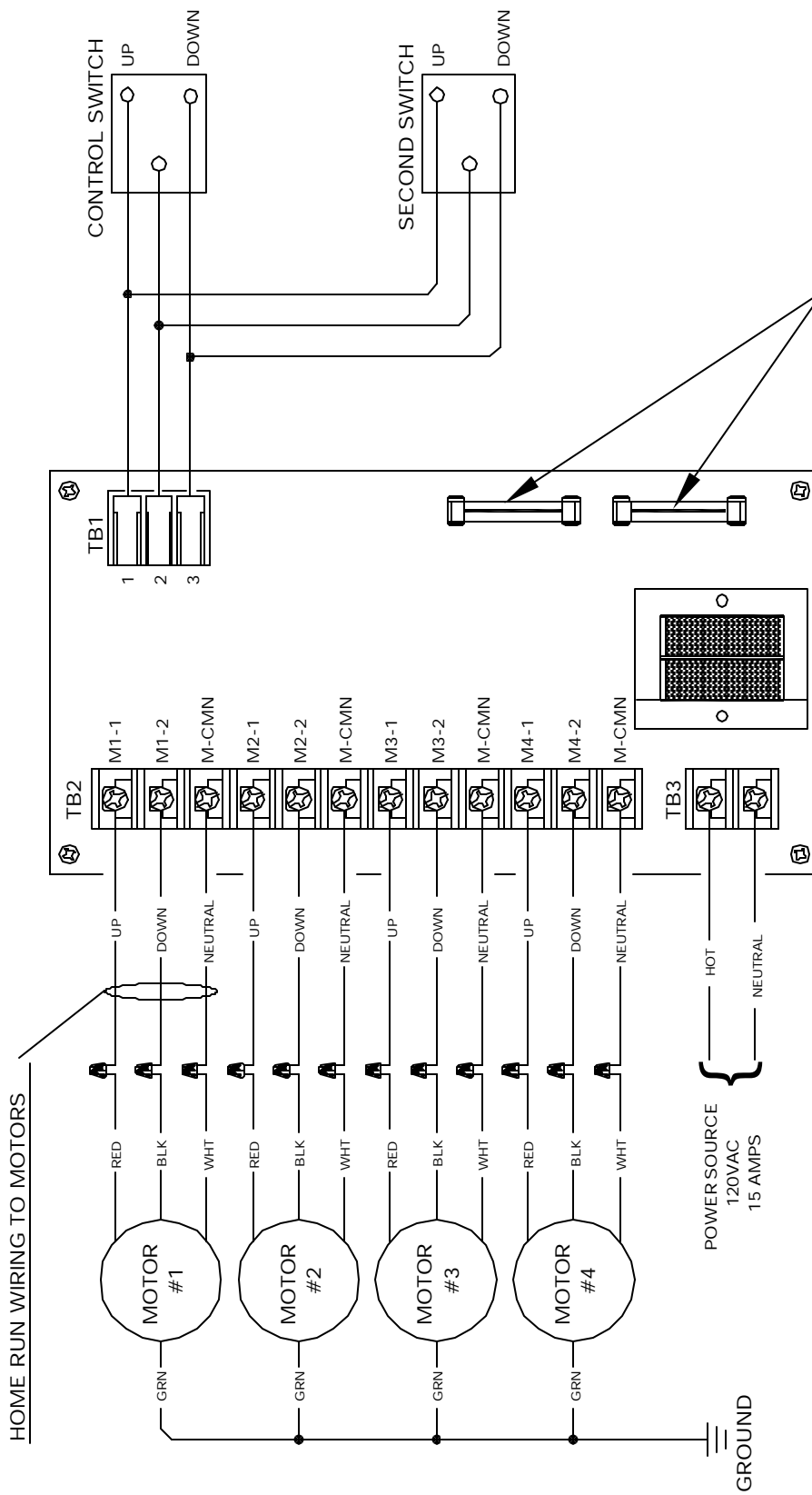


WIRING DIAGRAM-AGC100

IMPORTANT!

HIGH VOLTAGE OUTPUT-120VAC
FOLLOW ALL APPROPRIATE ELECTRICAL CODES WHEN INSTALLING



CAUTION! 120VAC
DISCONNECT POWER BEFORE SERVICING
REPLACE WITH SAME TYPE FUSE
4 AMP SLO-BLO

NOTES!

1. ALL CONTROL WIRING IS LOW VOLTAGE CLASS 2.
2. ALL WIRING TO MOTORS IS 120VAC.
3. ALL CONTROL SWITCHES TO BE SPDT CENTER-OFF MOMENTARY.

#15